

COVID-19 has adversely affected our local non-profit human service agencies. Funding has decreased, but the need for services has increased. Because of these circumstances, United Way of Chaves County's Board of Directors made the decision to be at the forefront of this year's campaign and collectively chair this year's fundraising effort.



**United Way of Chaves County
Board of Directors**

Pam Boyd, President
Farm Credit of New Mexico

Karen Griffo, 1st Vice President
Roswell Community Federal Credit Union

Stacie L. Sexe, CPA, 2nd Vice President
Sexe CPAs & Company

Anna Maria Matteucci, Secretary
Bank of the Southwest

Karen Rogers Melton, Treasurer
Ritter & Company, LLC

Charlotte Andrade
Chaves County Treasurer

Yasine Armstrong
BabyPage

Doug Austin
Country Club Church of Christ

Marty George
Albertsons Market, Main Street

Clarissa Gonzalez-Adams
Zia Select

Kristine G. Holloway
First American Bank

Stacye L. Hunter
Eastern New Mexico Medical Center

Lana Kite
Roswell Job Corps Center

Cindi Lucero
KOBR TV 8

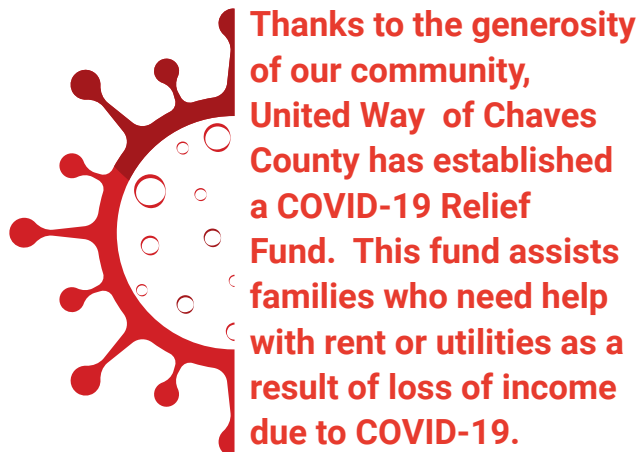
Beth Neeb
Community Volunteer

Karen L. Powers
Pioneer Bank

Adam Roe
Peppers Grill & Bar

Kelly Smith
Armstrong Energy Corporation

COL David W. West
New Mexico Military Institute



LIVE UNITED



United Way of Chaves County



When you provide a home for 15 kids, you need a long table, two rows of chairs, and a whole lot of love! Since 1979, Assurance Home has been making a difference in the lives of adolescent children who need caring support and a safe place to live.

MORE THAN 13,000 OF YOUR NEIGHBORS RECEIVED HELP THROUGH THESE UNITED WAY FUNDED PROGRAMS LAST YEAR

- American Red Cross
- Assurance Home
- Big Brothers Big Sisters of SENM
- Boy Scouts of America, Conquistador Council
- Boys & Girls Clubs of Chaves and Lincoln Counties
- Chaves County CASA
- Chaves County Health Council
- Chaves County JOY Centers
- Community Kitchen
- Down Syndrome Foundation of SENM
- Girl Scouts of the Desert Southwest
- Harvest Ministries
- Loaves & Fishes Community Development Corp.
- Main Thing First
- Midway Youth & Family Development Center
- Reflections & Recovery Ministries
- Roswell Homeless Coalition
- Roswell Literacy Council
- The Roswell Refuge
- Wings for LIFE

YOU MAKE ALL THE DIFFERENCE

YOUR DONATION
OF **\$200**
PER
PAYCHECK

will provide 15 families
with a 3-pound chicken
every month for a year.

YOUR DONATION
OF **\$500**
PER
PAYCHECK

will help 10 households
keep their water service
connected.

YOUR DONATION
OF **\$1000**
PER
PAYCHECK

will provide a home-
delivered lunch to an
elderly person five times
per week for six months.



Brad heats up the kitchen at 6:00 in the morning, and volunteers arrive four hours later to serve meals to more than 100 hungry people every day. The Community Kitchen relies on donations and volunteers to keep food on the table.



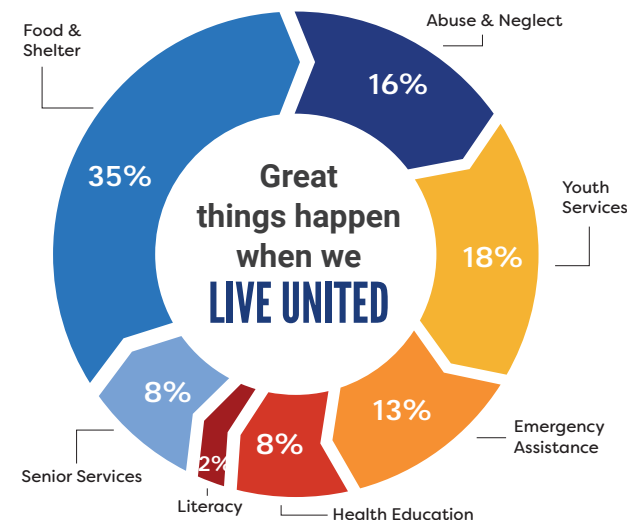
United Way of Chaves County

400 N. Pennsylvania Ave., Suite 230
P.O. Box 301 • Roswell, NM 88202-0301
575.622.4150

www.unitedwayccnm.org



YOUR DOLLARS MAKE AN IMPACT



WE THANK YOU
FOR YOUR
GENEROUS
DONATIONS
THAT HELP TO MAKE A
DIFFERENCE
IN YOUR COMMUNITY

**United Way of
Chaves County
FOUNDATION**



Taking Care of Chaves County, Now and in the Future